

border-radius

- border-image-source
- border-image-slice
- border-image-width
- border-image-repeat

write border image customize!

css gradient

- linear
- radial
- conic-gradient

<https://codepen.io/search/pens?q=css+gradient>

gradient or image to text:

```
background-image: -webkit-linear-gradient(92deg, #f35626, #feab3a);  
-webkit-background-clip: text;  
-webkit-text-fill-color: transparent;
```

text-shadow , box-shadow

- <https://codepen.io/search/pens?q=text+shadow>
- <https://codepen.io/search/pens?q=box+shadow>

```
input:indeterminate {  
  box-shadow: 0 0 10px 10px red;  
}  
=> box shadow for input=checkbox
```

CSS Text Effects

- white-space: nowrap - normal - pre
- text-overflow: clip , ellipsis
- word-wrap: break-word;
- writing-mode: horizontal-tb , vertical-rl
- -moz-text-align-last: right

word-break: normal (default):

This is some very very very long word. Words will break according to usual rules.

word-break: keep-all:

This is some very very very long word. This text will break at hyphens.

word-break: break-all:

This is some very very very long word. This text will break at any character.

transition

- transition
- transition-delay
- transition-duration
- transition-property
- transition-timing-function

transform => 2D , 3D

2D

- translate()
- rotate()
- scaleX() => similar to -webkit-box-reflect: below 20px;
- scaleY()
- scale()
- skewX()
- skewY()
- skew()
- matrix(scaleX(),skewY(),skewX(),scaleY(),translateX(),translateY())

3d

- translate3d(x,y,z)
- translateX
- translateY
- translateZ
- scale3d(x,y,z)
- scaleX
- scaleY
- scaleZ
- rotate3d(x,y,z,angle)
- rotateX()
- rotateY()
- rotateZ()
- matrix3d => using a 4x4 matrix of 16 values

another

- transform-origin
- perspective
- perspective-origin
- backface-visibility
- transform-style

animation

- @keyframes
- animation-name
- animation-duration
- animation-delay
- animation-iteration-count
- animation-direction
- animation-timing-function
- animation-fill-mode
- animation

example in codepen => slider in trainingsitedesign

columns

- column-count
- column-gap
- column-rule-style
- column-rule-width
- column-rule-color
- column-rule
- column-span
- column-width

clip-path

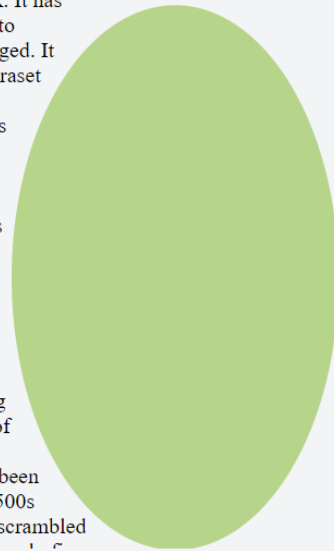
- circle(40%);
- ellipse(130px 140px at 10% 20%);
- polygon(50% 0, 100% 50%, 50% 100%, 0 50%);
- inset(100px 50px);
- path('M 0 200 L 0,75 A 5,5 0,0,1 150,75 L 200 200 z');
- url(path.svg#c1)

shape-outside

- circle(): for making circular shapes.
- ellipse(): for making elliptical shapes.
- inset(): for making rectangular shapes.
- polygon(): for creating any shape with 3 or more vertices.

url(): identifies which image should be used to wrap text around.

...nting and typesetting industry. Lorem Ipsum has been
...the 1500s when an unknown printer took a galley of
...n book. It has
...leap into
...unchanged. It
...of Letraset
...more
...e Aldus
...m.
...ad
...ae
...the 1500s
...e and
...t has
...leap
...lly
...ith the
...psum
...lishing
...sions of
...of the
...m has been
...the 1500s
...e and scrambled



```
div {  
  shape-outside: ellipse(120px 200px at 40% 50%);  
  clip-path: ellipse(120px 200px at 40% 50%);  
  width: 300px;  
  height: 500px;  
  float: right;  
  opacity: 0.6;  
  background-color: #8ebf42;  
}  
<div></div>  
  
<p>  
  Lorem Ipsum is simply dummy text of the printing and typesetting industry. Lorem Ipsum has been the indus
```

SVG

SVG stands for Scalable Vector Graphics.

```
<svg width="100" height="100">  
  <circle cx="50" cy="50" r="40" stroke="green" stroke-width="4" fill="yellow" />  
</svg>
```

```
<svg width="400" height="180">  
  <rect x="50" y="20" width="150" height="150"  
  style="fill:blue;stroke:pink;stroke-width:5;fill-opacity:0.1;stroke-opacity:0.9" />  
</svg>
```

```
<svg width="400" height="180">  
  <rect x="50" y="20" rx="20" ry="20" width="150" height="150" style="fill:red;stroke:black;stroke-width:5;opacity:0.5" />  
  
  Sorry, your browser does not support inline SVG.  
</svg>
```

```
<svg height="100" width="100">  
  <circle cx="50" cy="50" r="40" stroke="black" stroke-width="3" fill="red" />  
</svg>
```

```
<svg height="140" width="500">  
  <ellipse cx="200" cy="80" rx="100" ry="50"  
  style="fill:yellow;stroke:purple;stroke-width:2" />  
</svg>
```

```
<svg height="100" width="500">  
  <ellipse cx="240" cy="50" rx="220" ry="30" style="fill:yellow" />  
  <ellipse cx="220" cy="50" rx="190" ry="20" style="fill:white" />  
</svg>
```

```
<svg height="210" width="500">  
  <line x1="0" y1="0" x2="200" y2="200" style="stroke:rgb(255,0,0);stroke-width:2" />  
</svg>
```

```
<svg height="210" width="500">  
  <polygon points="200,10 250,190 160,210" style="fill:lime;stroke:purple;stroke-width:1" />  
</svg>
```

```
<svg height="250" width="500">  
  <polygon points="220,10 300,210 170,250 123,234" style="fill:lime;stroke:purple;stroke-width:1" />  
</svg>
```

```
<svg height="210" width="500">  
  <polygon points="100,10 40,198 190,78 10,78 160,198"  
trainingsitedesign.ir
```

آموزش کاربردی CSS, CSS3 توسط پارسا قربانیان

```
style="fill:lime;stroke:purple;stroke-width:5;fill-rule:evenodd;" />
```

```
</svg>
```

```
<svg height="180" width="500">
```

```
<polyline points="0,40 40,40 40,80 80,80 80,120 120,120 120,160"
```

```
style="fill:white;stroke:red;stroke-width:4" />
```

```
</svg>
```

```
<svg height="60" width="200">
```

```
<text x="0" y="15" fill="red" transform="rotate(30 20,40)">I love SVG</text>
```

```
</svg>
```

```
<svg height="90" width="200">
```

```
<text x="10" y="20" style="fill:red;">Several lines:
```

```
<tspan x="10" y="45">First line.</tspan>
```

```
<tspan x="10" y="70">Second line.</tspan>
```

```
</text>
```

```
</svg>
```

The <path> element is used to define a path.

The following commands are available for path data:

M = moveto

L = lineto

H = horizontal lineto

V = vertical lineto

C = curveto

S = smooth curveto

Q = quadratic Bézier curve

T = smooth quadratic Bézier curveto

A = elliptical Arc

Z = closepath

```
<svg height="210" width="400">
```

```
<path d="M150 0 L75 200 L225 200 Z" />
```

```
</svg>
```

stroke

stroke-width

stroke-linecap

stroke-dasharray

filter, linear, shadow ,... => self study

filter

- `.blur {filter: blur(4px);}`
- `.brightness {filter: brightness(0.30);}`
- `.contrast {filter: contrast(180%);}`
- `.grayscale {filter: grayscale(100%);}`
- `.huerotate {filter: hue-rotate(180deg);}`
- `.invert {filter: invert(100%);}`
- `.opacity {filter: opacity(50%);}`
- `.saturate {filter: saturate(7);}`
- `.sepia {filter: sepia(100%);}`
- `.shadow {filter: drop-shadow(8px 8px 10px green);}`

another

- object-position: 25px 10%;
- resize: both;
- overflow: auto;
- :root {
- --blue: #1e90ff;
- }
- body {
- background-color: var(--blue);
- }
- all: initial; => It means that all CSS properties are changed to the initial value
- background-blend-mode: lighten;
- border-collapse: separate;
- caption-side: bottom;
- caret-color: red;
- font-feature-settings: "c2sc", "smcp"; =>convert both upper and lowercase to small caps
- font-variant-caps: small-caps
- -webkit-hyphens: manual;
- -moz-tab-size: 4;
- table-layout: fixed;
- text-decoration-line: overline
- text-decoration-style: solid;
- text-indent: 30%;
- clip: rect(0px,60px,200px,0px); => similar to clip-path:inset
- block-size: 30px; similar to height!
- -webkit-user-select: none;

```
div {  
    width: 80px;  
    height: 25px;  
    text-align: center;  
    -webkit-appearance: button;  
    appearance: button;  
}
```

same as role attr in html

test => similar to e.preventDefault()

<p><q id="b">This is a <q>quote</q> inside a quote.</q></p> #b {quotes: "+" "-" "*" "/";} =>

+This is a *quote/ inside a quote.-

scroll-snap-type:

```
#container {  
  
  width: 80%;  
  
  aspect-ratio: 2/1;  
  
  margin: auto;  
  
  border: solid black 2px;  
  
  overflow-x: scroll;  
  
  white-space: nowrap;  
  
  scroll-snap-type: x mandatory;  
}
```

```
.blue {  
  
  background-color: lightblue;  
  
  height: 95%;  
  
  aspect-ratio: 1/2;  
}
```

```
.green {  
  
  background-color: lightgreen;  
  
  height: 50%;  
  
  aspect-ratio: 2/1;  
}
```

```
.blue, .green {  
  
  display: inline-block;  
  
  margin: 5px;  
  
  scroll-snap-align: center;  
}
```

</style>

</head>

<body>

<div id="container">

<div class="blue"></div>

<div class="green"></div>

<div class="blue"></div>

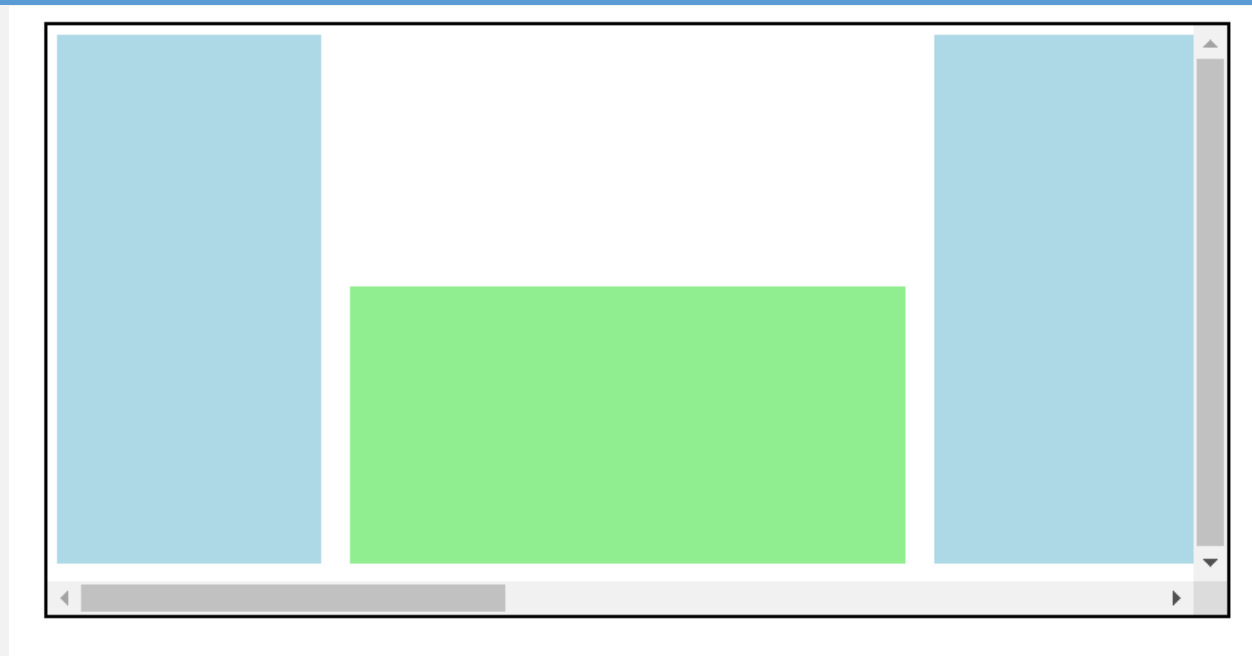
<div class="green"></div>

<div class="blue"></div>

<div class="green"></div>

<div class="blue"></div>

</div>



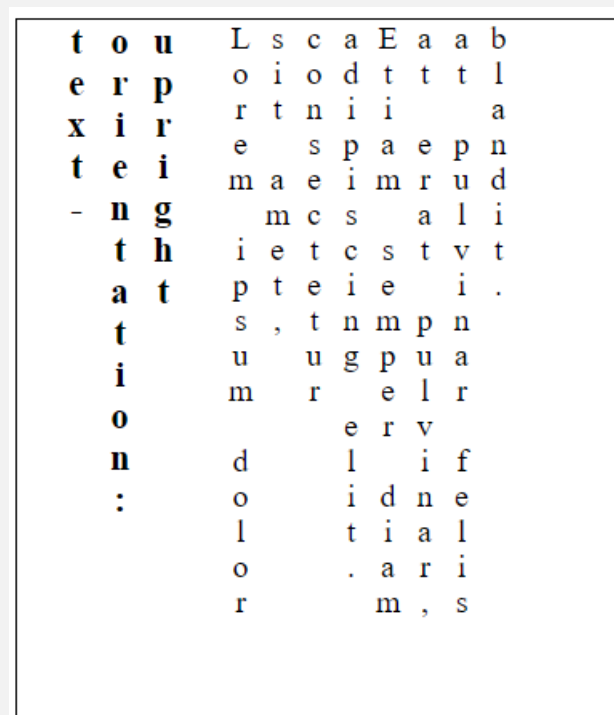
scrollbar-color:

```
div.scroller {  
  
  width: 300px;  
  
  height: 100px;  
  
  overflow-y: scroll;  
  
  scrollbar-color: pink green;  
  
}
```

Lorem ipsum dolor sit amet, consectetur
adipiscing elit, sed do eiusmod tempor
incididunt ut labore et dolore magna aliqua.
Ut enim ad minim veniam, quis nostrud
exercitation ullamco laboris nisi ut aliquip
... ..



text-orientation: upright;



<h1 style='border-block: 5px solid red;'>A heading with a solid red border in the block direction</h1>

A heading with a solid red border in the block direction

<h1 style='border-inline: 5px solid red;'>A heading with a solid red border in the inline direction</h1>

A heading with a solid red border in the inline direction

Box
decoration
break
property
example.

```
span {
  border: 3px solid #1c87c9;
  padding: 0em 1em;
  border-radius: 12px;
  font-size: 20px;
  line-height: 2;
}
span.box {
  box-decoration-break: clone;
  -webkit-box-decoration-break: clone;
  -o-box-decoration-break: clone;
}
```

Box

decoration

break

property

example.

font-kerning: auto | normal | none;

The font-kerning property controls the use of the kerning information stored in a font.

font-size-adjust: number | none | initial | inherit;

The font-size-adjust property controls the font size when the first specified font is not available

hanging-punctuation: none | first | last | allow-end | force-end | initial | inherit;

```
blockquote {
  font-size: 25px;
  width: 20em;
  border-left: 1px solid #000;
  padding: 3rem 0;
  hanging-punctuation: first;
}
```

Hyphens

none

An
extremely
lengthy
sentence

manual

An
extreme-
ly
lengthy
sentence

auto

An
extreme-
ly
lengthy
sentence

hyphenate-character

hyphenate-character: auto

A
veryvery-
very
long
word.

hyphenate-character: "="

A
veryvery=
very
long
word.

hyphenate-character: "/"

A
veryvery/
very
long
word.

hyphenate-character: "_"

A
veryvery_
very
long
word.

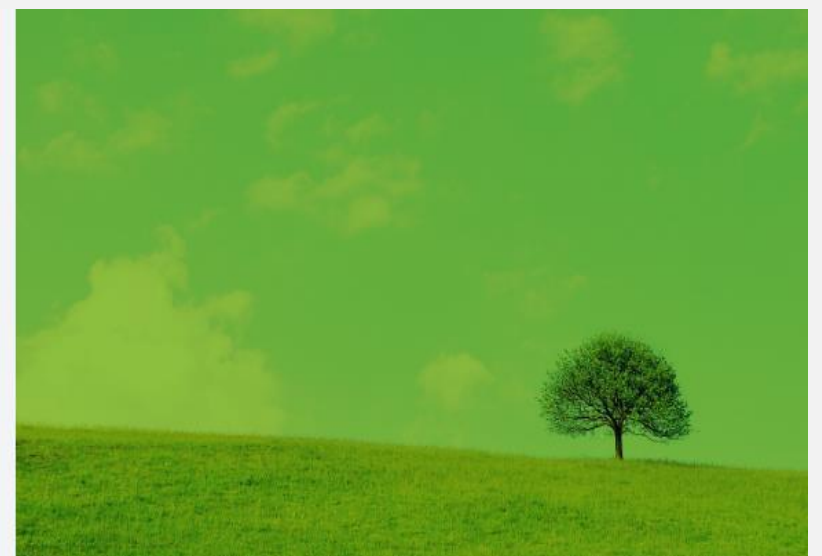
Display: box

```
.element p {  
  display: -webkit-box;  
  -webkit-line-clamp: 3;  
  -webkit-box-orient: vertical;  
  overflow: hidden;  
}
```

Lorem Ipsum is simply dummy text of the printing and typesetting industry. Lorem...

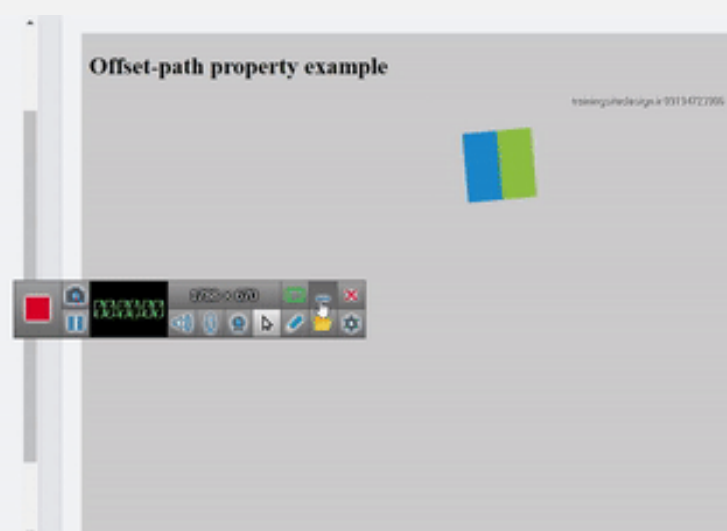
mix-blend-mode: multiply;

```
.example {  
  background-color: #8ebf42;  
  height: 800px;  
}  
img {  
  width: 100%;  
  height: auto;  
  float: left;  
  mix-blend-mode: multiply;  
}  
</style>  
  
<div class="example">  
    
</div>
```



offset-path: path("M18.45,58.46s52.87-70.07,101.25-.75,101.75-6.23,101.75-6.23S246.38,5.59,165.33,9.08s-15,71.57-94.51,74.56S18.45,58.46,18.45,58.46Z");

```
<!--  
body {  
  background-color: #ccc;  
}  
.mover {  
  width: 70px;  
  height: 70px;  
  background: linear-gradient(#8ebf42 50%, #1c87c9 50%);  
  position: absolute;  
  left: 30%;  
  top: 100px;  
  offset-path: path("M18.45,58.46s52.87-70.07,101.25-.75,101.75-6.23,101.75-6.23S246.38,5.59,165.33,9.08s-15,71.57-94.51,74.56S18.45,58.46,18.45,58.46Z");  
  offset-rotate: reverse;  
  animation: move 3s linear infinite;  
}  
@keyframes move {  
  100% {  
    offset-distance: 100%;  
  }  
}  
</style>  
<body>
```



scroll-behavior: auto | smooth | initial | inherit;

```
html {  
  scroll-behavior: auto;  
}
```

::-webkit-scrollbar

::-webkit-scrollbar-button

::-webkit-scrollbar-track

::-webkit-scrollbar-track-piece

::-webkit-scrollbar-thumb

::-webkit-scrollbar-corner

::-webkit-resizer

Widows :

The widows property specifies the minimum number of lines of a block-level container that are left at the top of a page or column, leaving the remaining lines on the previous page or column.

zoom: 500% or 5 similar to scale

accent-color:

```
input[type=checkbox] {  
  accent-color: red;  
}
```

☒ I have a bike
☒ I have a car

aspect-ratio :

Aspect ratio is width/height

```
div {  
  background-color: red;  
  width: 100px;  
  aspect-ratio: 5/10;  
}
```

Hello

backdrop-filter:

```
div.background {  
  background: lightblue url(klematis.jpg) no-repeat center;  
  background-size: cover;  
  align-items: center;  
  display: flex;  
  justify-content: center;  
  height: 400px;  
  width: 400px;  
}  
  
div.transbox {  
  background-color: rgba(255, 255, 255, 0.4);  
  -webkit-backdrop-filter: blur(5px);  
  backdrop-filter: blur(5px);  
  padding: 20px;  
  margin: 30px;  
  font-weight: bold;  
}  
  
<div class="background">  
  <div class="transbox">  
    <p>backdrop-filter: blur(5px)</p>  
  </div>  
</div>
```



box-reflect:

```
<html>  
<head>  
<style>  
img {  
  -webkit-box-reflect: below;  
}  
</style>  
</head>  
<body>  
  
  
</body>  
</html>
```

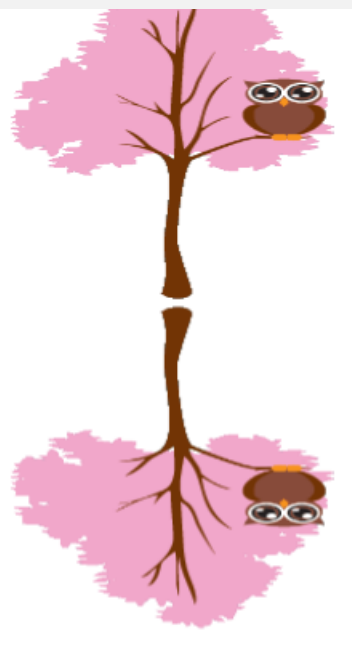


image-rendering:

image-rendering: auto;



image-rendering: crisp-edges;



image-rendering: pixelated;



image-rendering: smooth;



mask-image:

```
.mask1 {  
  -webkit-mask-image: url(w3logo.png);  
  mask-image: url(w3logo.png);  
  -webkit-mask-size: 100%;  
  mask-size: 100%;  
  -webkit-mask-repeat: no-repeat;  
  mask-repeat: no-repeat;  
}  
</style>  
</head>  
<body>  
  
<div class="mask1">  
  
</div>  
  
</body>  
</html>
```



Import the "master.css" style sheet into the current style sheet:

```
@import "master.css"; /* Using a string */
```

or

```
@import url("master.css"); /* Using a url */
```

```
@import "master.css" screen and (max-width: 768px);
```


@page :

```
/* default for all pages */
@page {
    margin: 2in;
}

/* margin on left page */
@page :left {
    margin: 1in;
}

/* margin on right page */
@page :right {
    margin: 3in;
}

/* top margin on first page */
@page :first {
    margin-top: 5in;
}
```